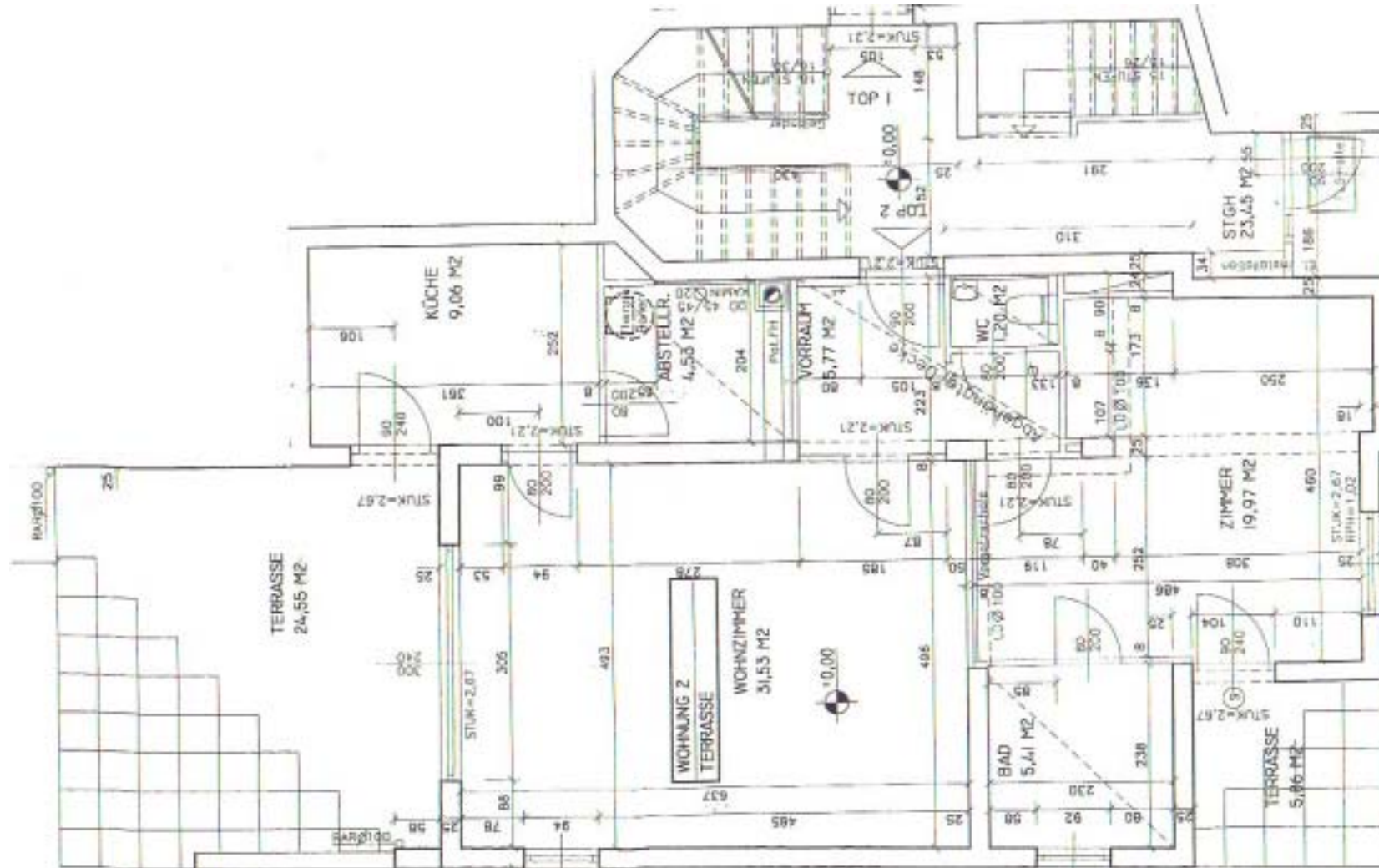


Information sheet of TOP 2

TOP 2: Plan view



TOP 2: Description

| | | |
|--------------------------------|---|--|
| Position | Ground floor | |
| Square metres: | 77,06 m2 | |
| Rooms: | <ul style="list-style-type: none"> • Vestibule • Living room • Sleeping room | <ul style="list-style-type: none"> • Bath (complete equipped with shower and bath tub) • WC • Kitchen (with all aids) • Store room |
| Terraces/Loggia/Garden: | Terrace 1: 24,55 m2, garden-/south side Terrace 2: 5,86 m2, northeast side Garden: 166,10 m2 | |
| Equipment: | <ul style="list-style-type: none"> • Parquet • Heating • Safe • Alarm plant | <ul style="list-style-type: none"> • Satellite-TV • Towel dryer • electric awning • basement |

TOP 2: Rent & Running costs

| | | |
|-------------------------|------------------|-------------------------------------|
| Rent/Monat: | | Running costs/month: E 205,- |
| Net rent | E 950,- | |
| + 10% VAT | E 95,- | |
| Gross rent | E 1.045,- | |